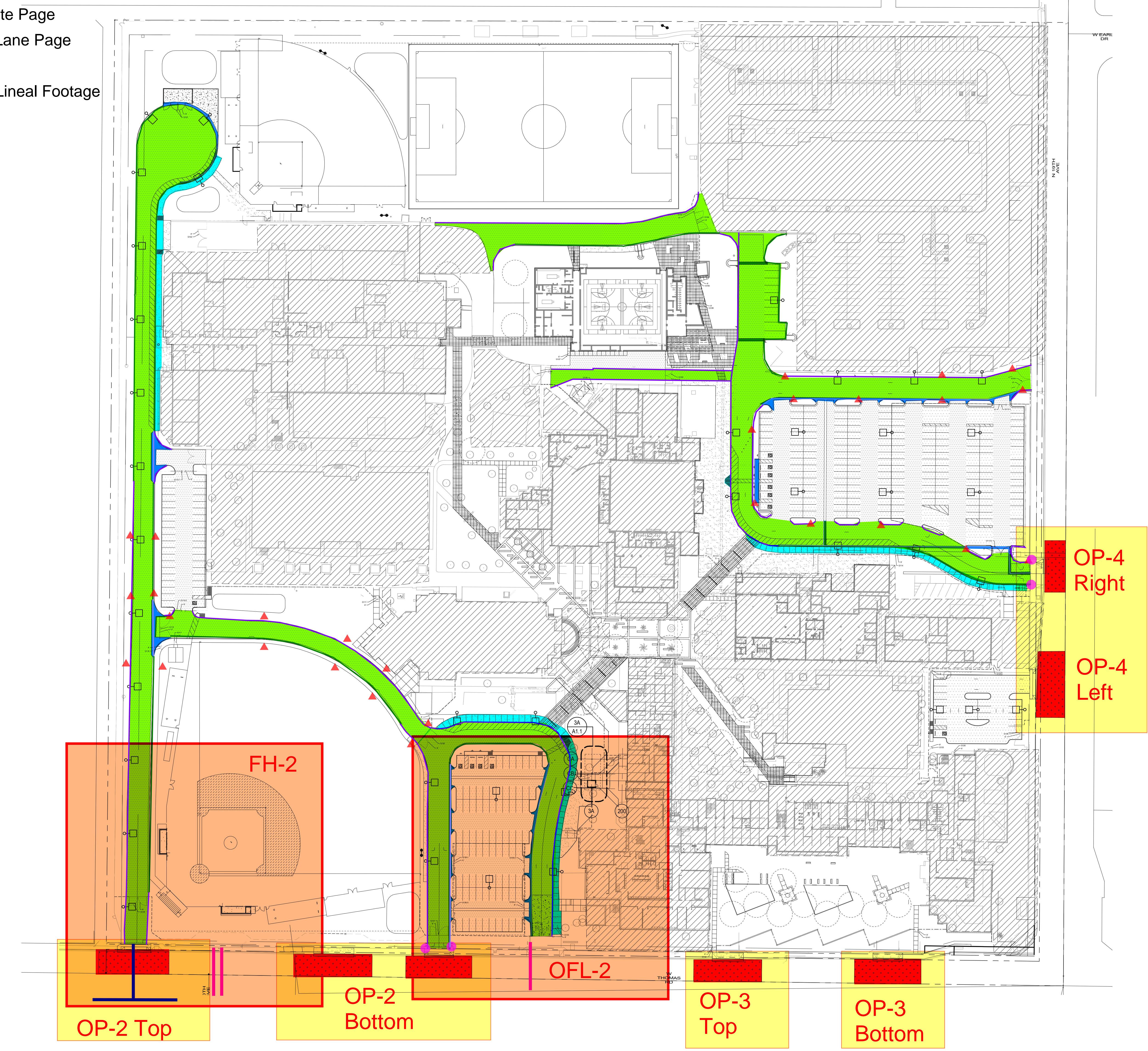


# Adjacent Ways Scope of Work

- Asphalt
- Valley Gutter and Apron
- Curb and Gutter
- Vertical Curb
- Do Not Enter Sign
- ▲ Fire Lane Sign
- Limits of Off-site Page
- Limits of Fire Lane Page
- Sidewalks
- Valley Gutter Lineal Footage

1  
2  
3  
4  
5



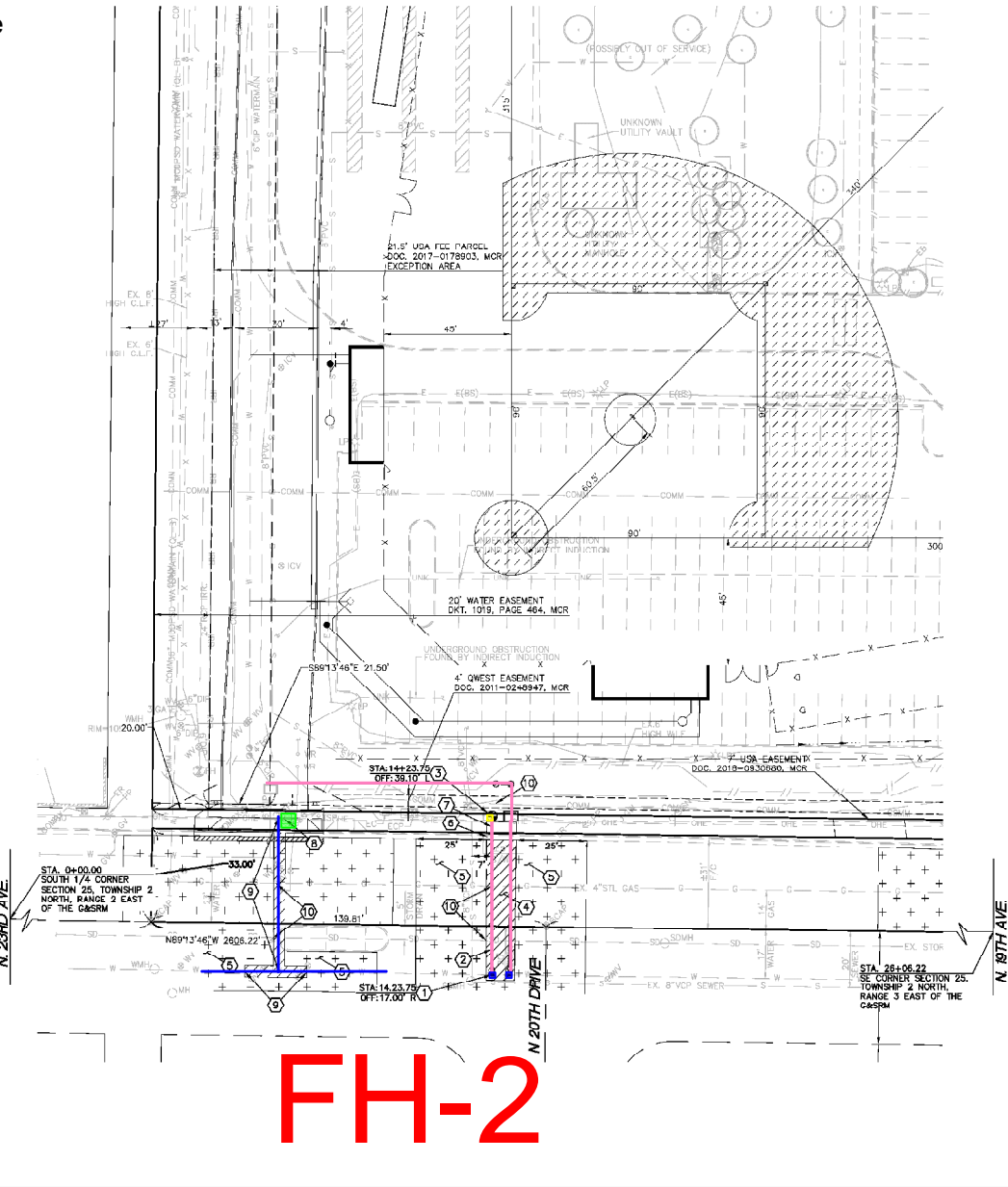
**ARCHITECTURAL SITE PLAN**  
SCALE: 1" = 60'-0"

Autodesk DocuPrint/35-24178-00 Phoenix Union HS/Metro Tech High School/35-24178-00 Metro Tech SITE\_AR\_2024.rvt  
8/12/2025 5:31:15 PM

- Taping Sleeve and Gate Valve
- Iron Pipe
- Salvaged Fire Hydrant
- Remove and Replace Water Line
- Salvage Existing Fire Hydrant

RAIN LINE (MAP DRAWN)  
VE (MAP DRAWN)  
TE  
NT RESTORATION

- 1088.75 EXISTING CUTTER ELEVATION
- 1100.40 EXISTING LANDSCAPE CURB ELEVATION
- 1087.46 EXISTING NATURAL GROUND ELEVATION
- 1088.95 EXISTING PAVEMENT ELEVATION
- 1088.78 EXISTING SPEEDWAY ELEVATION
- 1100.54 EXISTING STAIR ELEVATION
- 1100.50 EXISTING SIDEWALK ELEVATION
- 1089.06 EXISTING TOP OF BENCH ELEVATION
- 1089.65 EXISTING TRENCH DRAIN ELEVATION
- 1087.97 EXISTING TOE OF SLOPE ELEVATION
- 1089.27 EXISTING TOP OF WALL ELEVATION
- 1087.00 EXISTING WEEP HOLE ELEVATION
- 1100.16 EXISTING TOP OF CURB ELEVATION
- SCOMBX EXISTING COMMUNICATION BOX
- 1097.89 EXISTING COMMUNICATION MANHOLE (WITH RIM ELEVATION)
- OR EXISTING COMMUNICATION RISER
- CC1 EXISTING CELL TOWER
- 1098.62 EXISTING ELECTRICAL MANHOLE (WITH RIM ELEVATION)
- EB EXISTING ELECTRICAL BOX
- ER EXISTING ELECTRICAL RISER
- LP EXISTING LIGHT POLE
- EBB EXISTING ELECTRICAL BREAKER BOX
- ECAB EXISTING ELECTRICAL CABINET
- ET EXISTING ELECTRICAL TRANSFORMER
- ICV EXISTING IRRIGATION CONTROL VALVE
- IRD EXISTING IRRIGATION DRIP BOX
- 1087.30 EXISTING ARE DRAIN (WITH RIM ELEVATION)
- 1086.33 EXISTING BUBBLER BOX (WITH RIM ELEVATION)
- 1086.07 EXISTING DRYWELL (WITH RIM ELEVATION)
- 1085.98 EXISTING CATCH BASIN (WITH RIM ELEVATION)
- SDCO EXISTING STORM DRAIN CLEANOUT
- 1087.78 EXISTING GREASE INTERCEPTOR (WITH RIM ELEVATION)
- 1089.43 EXISTING SANITARY SEWER MANHOLE (WITH RIM ELEVATION)
- SSCO EXISTING SANITARY SEWER CLEANOUT
- LWVLT EXISTING WATER VAULT
- 1088.86 EXISTING WATER MANHOLE (WITH RIM ELEVATION)
- WR EXISTING WATER RISER
- WV EXISTING WATER VALVE
- DCV EXISTING DOUBLE CHECK VALVE
- BFP EXISTING BACKFLOW PREVENTOR
- FH EXISTING FIRE HYDRANT
- FDC EXISTING FIRE DEPARTMENT CONNECTION
- CLM EXISTING COLUMN
- PB EXISTING PIPE BOLLARD
- SGN EXISTING SIGN
- CCVL1 EXISTING COMMUNICATION VAULT
- TRF EXISTING TREE
- E(US) EXISTING ELECTRICAL LINE (BLUESTAKE)
- E EXISTING ELECTRICAL LINE (MAP DRAWN)
- COMM EXISTING COMMUNICATION LINE (MAP DRAWN)
- C EXISTING GAS LINE (MAP DRAWN)
- RR EXISTING IRRIGATION LINE (MAP DRAWN)
- W EXISTING WATER LINE (MAP DRAWN)

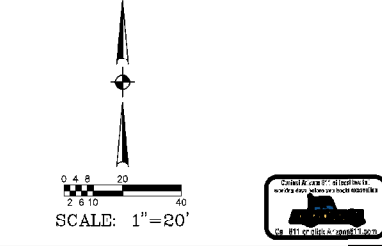


- PUBLIC FIRE LINE CONSTRUCTION NOTES:**
- ① INSTALL 10" X 6" TAPPING SLEEVE AND 8" GATE VALVE WITH VALVE BOX AND COVER (MAG STANDARD DETAIL NO. 3-340 AND CITY OF PHOENIX UTILAL NO. 3, P1391-1, TYPE 'A' AND 270).
  - ② INSTALL 6" POLYWRAPPED DUCTILE IRON PIPE (PRESSURE CLASS 350, MINIMUM THICKNESS CLASS 50) WATER LINE
  - ③ INSTALL SALVAGED FIRE HYDRANT (CITY OF PHOENIX STANDARD DETAIL NO. P1360). REPAINT AND EST THE FIRE HYDRANT PER CITY OF PHOENIX REQUIREMENTS.
  - ④ SAWCUT, REMOVE AND REPLACE EXISTING A.C. PAVEMENT (MAG SPECIFICATION SECTION 336 AND CITY OF PHOENIX STANDARD DETAIL NO. P1200 OR MATCH EXISTING, WHICHEVER IS GREATER).
  - ⑤ MILL AND OVERLAY THE EXISTING PAVEMENT WITH CRACK AND MICRO-SEAL PCR CITY OF PHOENIX STREET CUT POLICY (TRT 00164 AND ORDINANCE G-6308).
  - ⑥ SAWCUT, REMOVE AND REPLACE EXISTING CONCRETE VERTICAL CURB AND CUTTER TO NEAREST JOINT, OR AS DIRECTED BY CITY INSPECTOR (MAG STANDARD DETAIL NO. 220-1, TYPE 'A'). BACKFILL WITH HALF SACK SLURRY.
  - ⑦ SAWCUT, REMOVE AND REPLACE EXISTING CONCRETE SIDEWALK TO NEAREST JOINT, OR AS DIRECTED BY THE CITY INSPECTOR (CITY OF PHOENIX STANDARD DETAIL P1230). BACKFILL WITH HALF SACK SLURRY.
  - ⑧ REMOVE AND SALVAGE EXISTING FIRE HYDRANT FOR LATER REINSTALLATION.
  - ⑨ REMOVE EXISTING WATER LINE AND EXISTING WATER VALVE UP TO THE WATER MAIN. REMOVE 10LF IN EACH DIRECTION OF THE WATER MAIN OR AS NEEDED TO REMOVE THE EXISTING TEE. A NEW SECTION OFF DUCTILE IRON WATER MAIN PIPE WILL BE REINSTALLED IN PLACE OF THE REMOVED WATER MAIN (CITY OF PHOENIX STANDARD DETAIL NO. P1344).
  - ⑩ POT HOLE AND FIELD VERIFY ELEVATION AND LOCATION PRIOR TO CONSTRUCTION. MAINTAIN A MINIMUM 12" CLEARANCE BETWEEN OUTSIDE OF NEW FIRE LINE AND OUTSIDE OF DRY UTILITIES

**UNDERGROUND UTILITY TRACER WIRE NOTE**  
ALL NEW UNDERGROUND FACILITIES/UTILITIES SHALL BE INSTALLED WITH A DETECTABLE UNDERGROUND LOCATION DEVICE. INSTALL A #18 INSULATED TRACER WIRE SECURELY ATTACHED TO EACH UTILITY AT 6'-FEET ON CENTER. 12" OF TRACER WIRE SHALL BE ACCESSIBLE ABOVE GRADE AT THE TERMINATION AND SHALL BE SECURELY ATTACHED AT THAT POINT. THE CONTRACTOR SHALL VERIFY WHICH COLOR TO USE FOR STORM DRAIN, WATER, SEWER, ETC., WITH THE CITY OF PHOENIX AND APPROPRIATE UTILITY COMPANIES. THE CONTRACTOR SHALL INCLUDE ALL COSTS ASSOCIATED WITH THIS RFI/RFI/MPT IN THEIR BID.

**NOTE:**  
THRUST BLOCKS WILL NOT BE PERMITTED IN THE CITY OF PHOENIX RIGHT-OF-WAY. JOINT RESTRAINT PER M.A.G. STANDARD DETAILS 302-1, 302-2, 303-1, AND 303-2 SHALL BE USED WHEN BONDS ARE ALLOWED IN THE CITY OF PHOENIX RIGHT-OF-WAY

**NOTE:**  
ALL BIDDING IN CITY OF PHOENIX RIGHT-OF-WAY TO BE INSTALLED PER CITY REQUIREMENTS.



**BIDLRGROUP**

**BIDDING**

EXPRES 9-30-25

**Bowman**

1800 N. Desert Drive, Suite 210  
Tempe, Arizona 85288  
Phone: (480) 834-6600

**METRO TECH - PH2**

PHOENIX UNION HIGH SCHOOL DISTRICT

BIDDING SET

85-00-05  
Revisions

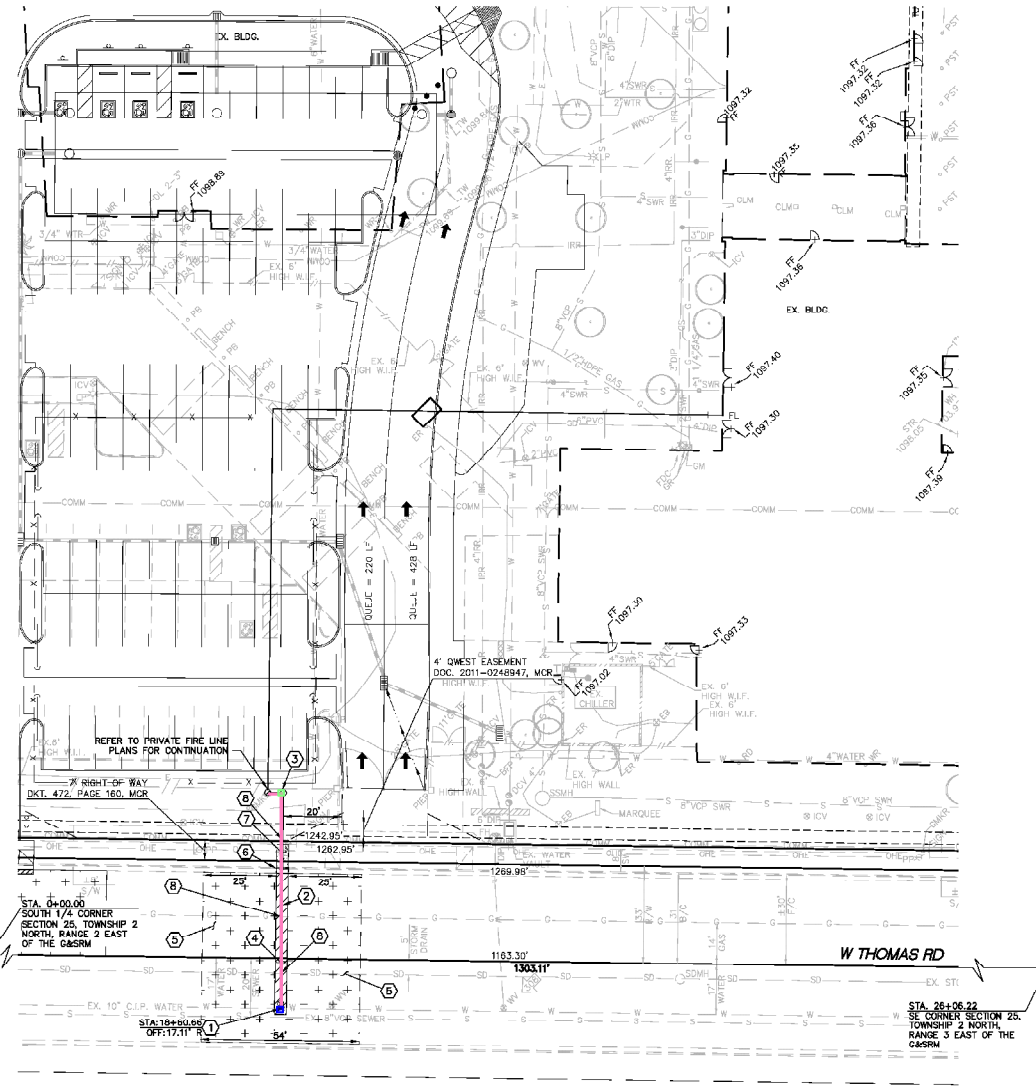
450369

2 of 2  
**FH-2**

- Iron Pipe
- Backflow Prevention Assembly
- Taping Sleeve and Gate Valve

1 DRAIN LINE (MAP DRAWN)  
 7 LINE (MAP DRAWN)  
 R/W  
 100' E  
 EMENT RESTORATION

- 1007.82 FT EXISTING FACE OF CURB ELEVATION
- 1009.00 FT EXISTING FINISH FLOOR ELEVATION
- 1009.22 FT EXISTING FLOW LINE ELEVATION
- 1009.03 FT EXISTING CUTTER ELEVATION
- 1008.76 FT EXISTING LANDSCAPE CURB ELEVATION
- 1007.46 FT EXISTING NATURAL GROUND ELEVATION
- 1008.95 FT EXISTING PAVEMENT ELEVATION
- 1008.78 FT EXISTING STAIR ELEVATION
- 1100.54 FT EXISTING SIDEWALK ELEVATION
- 1009.06 FT EXISTING TRENCH DRAIN ELEVATION
- 1009.65 FT EXISTING TOE OF SLOPE ELEVATION
- 1009.27 FT EXISTING TOP OF WALL ELEVATION
- 1009.00 FT EXISTING WEERHOLE ELEVATION
- 1100.18 FT EXISTING TOP OF CURB ELEVATION
- SCOMBX EXISTING COMMUNICATION BOX
- 1009.59 EXISTING COMMUNICATION MANHOLE (WITH RIM ELEVATION)
- OR EXISTING COMMUNICATION RISER
- CI EXISTING CELL TOWER
- 1009.62 EXISTING ELECTRICAL MANHOLE (WITH RIM ELEVATION)
- EB EXISTING ELECTRICAL BOX
- ER EXISTING ELECTRICAL RISER
- LP EXISTING LIGHTPOLE
- EBB EXISTING ELECTRICAL BREAKER BOX
- ECAB EXISTING ELECTRICAL CABINET
- ET EXISTING ELECTRICAL TRANSFORMER
- ICV EXISTING IRRIGATION CONTROL VALVE
- IBD EXISTING IRRIGATION DRIP BOX
- 1097.30 EXISTING ARE DRAIN (WITH RIM ELEVATION)
- 1096.33 EXISTING BUBBLER BOX (WITH RIM ELEVATION)
- 1096.07 EXISTING DRYWELL (WITH RIM ELEVATION)
- 005.98 EXISTING CATCH BASIN (WITH RIM ELEVATION)
- SDCO EXISTING STORM DRAIN CLEANOUT
- 1007.78 EXISTING GREASE INTERCEPTOR (WITH RIM ELEVATION)
- H EXISTING SANITARY SEWER MANHOLE (WITH RIM ELEVATION)
- 1099.43 EXISTING SANITARY SEWER CLEANOUT
- SSCO EXISTING SANITARY SEWER CLEANOUT
- LWVLT EXISTING WATER VAULT
- H EXISTING WATER MANHOLE (WITH RIM ELEVATION)
- WR EXISTING WATER RISER
- WV EXISTING WATER VALVE
- DCV EXISTING DOUBLE CHECK VALVE
- BFP EXISTING BACKFLOW PREVENTOR
- FH EXISTING FIRE HYDRANT
- FDC EXISTING FIRE DEPARTMENT CONNECTION
- CLM EXISTING COLUMN
- PB EXISTING PIPE BOLLARD
- SGN EXISTING SIGN
- CVL1 EXISTING COMMUNICATION VAULT
- TRF EXISTING TREE
- EL(US) EXISTING ELECTRICAL LINE (BLUESTAKE)
- E EXISTING ELECTRICAL LINE (MAP DRAWN)
- COM EXISTING COMMUNICATION LINE (MAP DRAWN)
- G EXISTING GAS LINE (MAP DRAWN)
- RR EXISTING IRRIGATION LINE (MAP DRAWN)
- W EXISTING WATER LINE (MAP DRAWN)

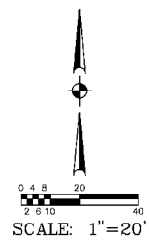


- PUBLIC FIRE LINE CONSTRUCTION NOTES:**
- 1) INSTALL 8" X 8" TAPPING SLEEVE AND 8" GATE VALVE WITH VALVE BOX AND COVER (MAG STANDARD DETAIL NO. 31-340 AND CITY OF PHOENIX DETAIL NO. 31, P1391-1, TYPE 'A' AND 270).
  - 2) INSTALL 8" POLYWRAPPED DUCTILE IRON PIPE (PRESSURE CLASS 350, MINIMUM THICKNESS CLASS 50) WATER LINE)
  - 3) INSTALL 8" DOUBLE CHECK VALVE BACKFLOW PREVENTION ASSEMBLY (CITY OF PHOENIX STANDARD DETAIL NO P1352)
  - 4) SAWCUT, REMOVE AND REPLACE EXISTING A.C. PAVEMENT (MAG SPECIFICATION SECTION 336 AND CITY OF PHOENIX STANDARD DETAIL NO. P1200 OR MATCH EXISTING, WHICHEVER IS GREATER).
  - 5) MILL AND OVERLAY THE EXISTING PAVEMENT WITH CRACK AND MICRO-SEAL PER CITY OF PHOENIX STREET CUT POLICY (TRT 00164 AND ORDINANCE G-6308).
  - 6) SAWCUT, REMOVE AND REPLACE EXISTING CONCRETE VERTICAL CURB AND GUTTER TO NEAREST JOINT, OR AS DIRECTED BY CITY INSPECTOR (MAG STANDARD DETAIL NO. 220-1, TYPE 'A'). BACKFILL WITH HALF SACK SLURRY.
  - 7) SAWCUT, REMOVE AND REPLACE EXISTING CONCRETE SIDEWALK TO NEAREST JOINT, OR AS DIRECTED BY THE CITY INSPECTOR (CITY OF PHOENIX STANDARD DETAIL P1230). BACKFILL WITH HALF SACK SLURRY.
  - 8) POT HOLE AND FIELD VERIFY ELEVATION AND LOCATION PRIOR TO CONSTRUCTION. MAINTAIN A MINIMUM 12" CLEARANCE BETWEEN OUTSIDE OF NEW FIRE LINE AND OUTSIDE OF DRY UTILITIES

**UNDERGROUND UTILITY TRACER WIRE NOTE**  
 ALL NEW UNDERGROUND FACILITIES/UTILITIES SHALL BE INSTALLED WITH A DETECTABLE UNDERGROUND LOCATION DEVICE. INSTALL A #18 INSULATED TRACER WIRE SECURELY ATTACHED TO EACH UTILITY AT 8'-FEET ON CENTER. 12" OF TRACER WIRE SHALL BE ACCESSIBLE ABOVE GRADE AT THE TERMINATION AND SHALL BE SECURELY ATTACHED AT THAT POINT. THE CONTRACTOR SHALL VERIFY WHICH COLOR TO USE FOR STORM DRAIN, WATER, SEWER, ETC., WITH THE CITY OF PHOENIX AND APPROPRIATE UTILITY COMPANIES. THE CONTRACTOR SHALL INCLUDE ALL COSTS ASSOCIATED WITH THIS REQUIREMENT IN THEIR BID.

**NOTE:**  
 THRUST BLOCKS WILL NOT BE PERMITTED IN THE CITY OF PHOENIX RIGHT-OF-WAY. JOINT RESTRAINT PER M.A.G. STANDARD DETAILS 302-1, 302-2, 303-1, AND 303-2 SHALL BE USED WHEN DEMOS ARE ALLOWED IN THE CITY OF PHOENIX RIGHT-OF-WAY

**NOTE:**  
 ALL BEDDING IN CITY OF PHOENIX RIGHT-OF-WAY TO BE INSTALLED PER CITY REQUIREMENTS.



OFL-2



**EDLGROUP**

**BIDDING DOCUMENT**  
EXPIRES 9-30-25

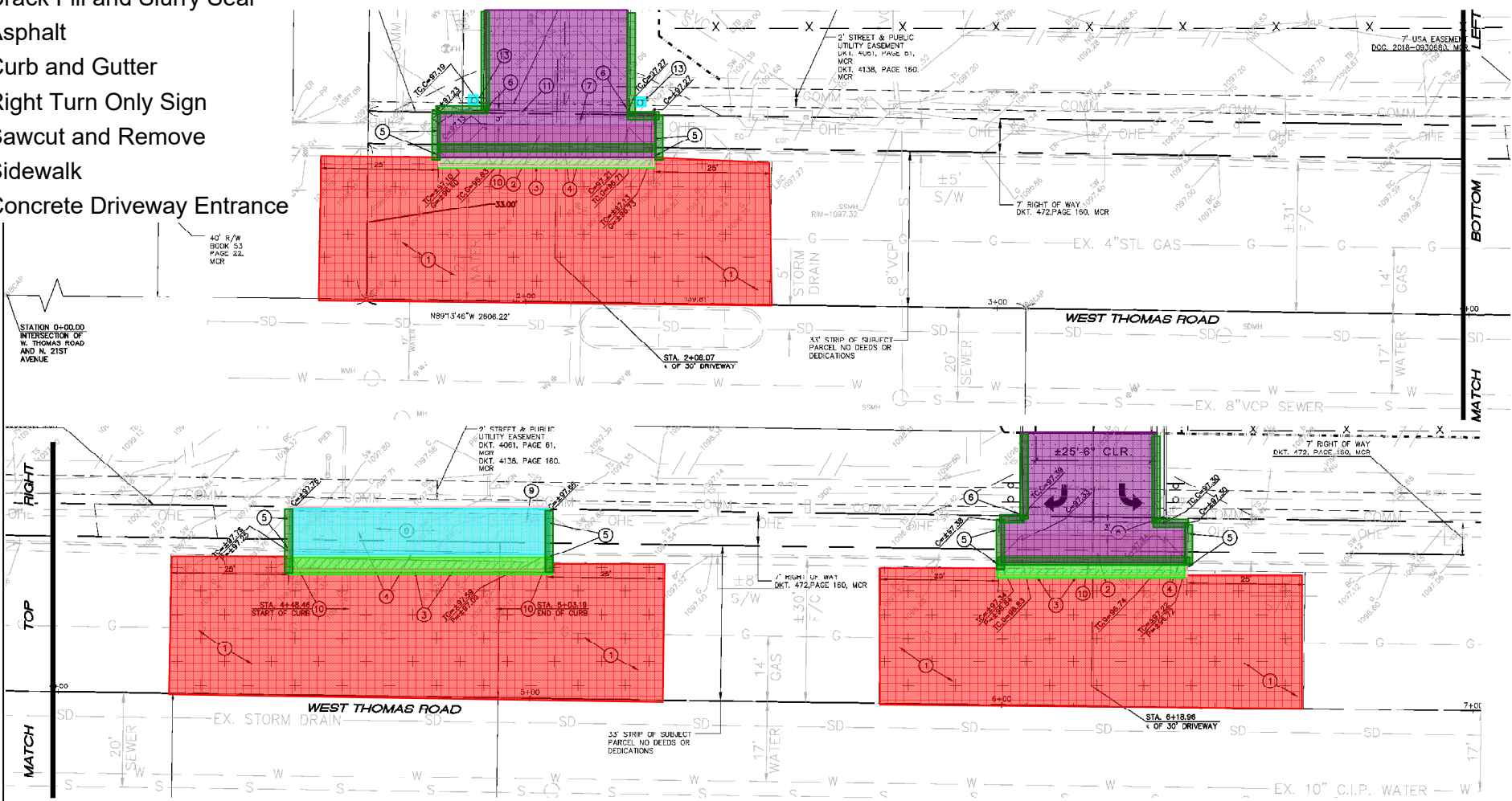
**Bowman**  
1800 N. Central Expressway, Suite 210  
Tempe, Arizona 85281  
Phone: (480) 924-6200  
www.bowman.com

**METRO TECH - PH2**  
PHOENIX UNION HIGH SCHOOL DISTRICT

BIDDING SET  
85-00-05  
Revisions  
450369

2 OF 2  
**OFL-2**

- Crack Fill and Slurry Seal
- Asphalt
- Curb and Gutter
- Right Turn Only Sign
- Sawcut and Remove
- Sidewalk
- Concrete Driveway Entrance

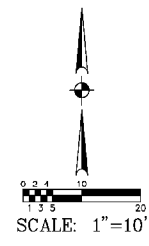


**OFFSITE PAVING CONSTRUCTION NOTES:**

- 1 CRACK FILL AND SLURRY SEAL ROADWAY PER THE CITY OF PHOENIX PAVEMENT CURB POLICY, APPL. TYPE IV SLURRY SEAL PER THE CITY OF PHOENIX REQUIREMENTS TO HALF WIDTH OF W. THOMAS ROAD OR N. 19TH AVENUE IMPACTED BY PAVEMENT REMOVAL OR REPLACEMENT. THE TREATMENT AREA SHALL EXTEND 25' IN BOTH DIRECTIONS FROM THE PAVEMENT CUTS. CRACK FILL AND SLURRY SEAL BETWEEN EXISTING AND NEW PAVEMENT AREAS PRIOR TO ANY PAVEMENT TREATMENT.
- 2 CONSTRUCT CONCRETE DRIVEWAY ENTRANCE (CITY OF PHOENIX STANDARD DETAIL NO. P1255-1).
- 3 SAWCUT REMOVE AND REPLACE A MINIMUM 2 FEET (2') OR EXISTING A.C. PAVEMENT (MAG SECTION 336 AND CITY OF PHOENIX STANDARD DETAIL NO. P1200, TYPE B, OR MATCH EXISTING, WHICHEVER IS GREATER).
- 4 SAWCUT AND REMOVE EXISTING CONCRETE VERTICAL CURB, GUTTER AND SIDEWALK.
- 5 MATCH EXISTING ELEVATION AND LOCATION.
- 6 INSTALL CURB TERMINATION (MAG STANDARD DETAIL NO. 222).

- 7 EXISTING FIRE HYDRANT TO BE RELOCATED (SEE PUBLIC FIRE HYDRANT PLANS FOR DETAILS).
- 8 INSTALL CONCRETE SIDEWALK (CITY OF PHOENIX STANDARD DETAIL NO. P1230).
- 9 EXISTING LIGHT POLE TO REMAIN. PROTECT FROM DAMAGE.
- 10 INSTALL CONCRETE VERTICAL CURB AND GUTTER (MAG STANDARD DETAIL NO. 220-1, TYPE A).
- 11 CONTRACTOR SHALL COORDINATE WITH QWEST TO RELOCATE EXISTING COMMUNICATION BOX OUT OF NEW DRIVEWAY ENTRANCE LOCATION.
- 12 CONSTRUCT DRIVEWAY ENTRANCE (CITY OF PHOENIX STANDARD DETAIL NO. P1255-2).
- 13 INSTALL "RIGHT TURN ONLY" SIGN (M.U.T.C.D. R3-5R, WITH POST AND BASE PER MAG STANDARD DETAIL NO. 131, TYPE 'B' (TOP OF SIGN SHALL BE 6' ABOVE GRADE)).

OP-2



**EDLARGROUP**

**Bowman**

PHOENIX OFFICE  
180 N. Dearborn Drive, Suite 210  
Tempe, Arizona 85283  
Phone: (480) 224-6242  
www.bowman.com

METRO TECH - PH2  
PHOENIX UNION HIGH SCHOOL DISTRICT

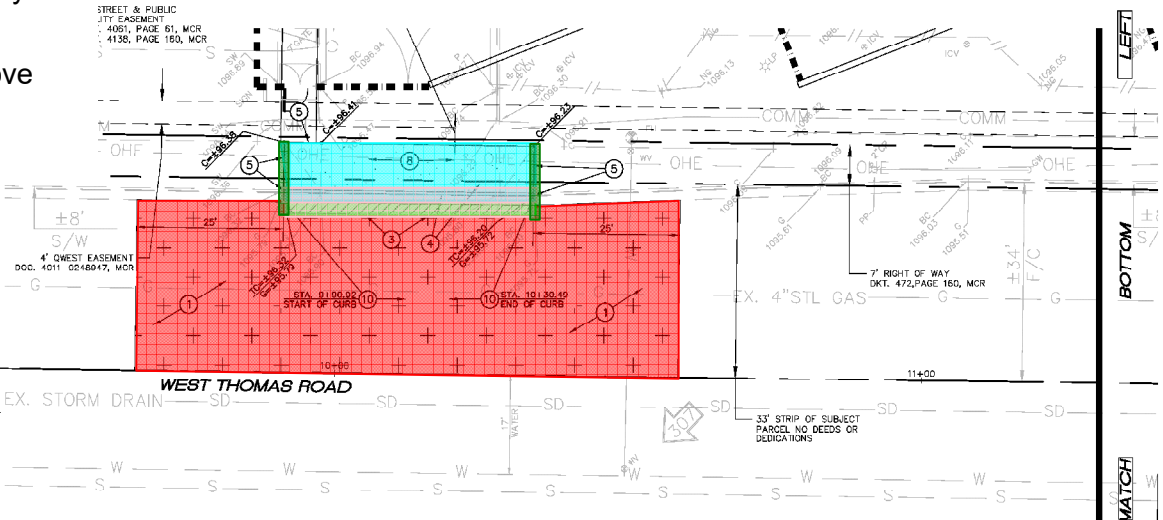
BIDDING SET  
65-03-05  
Revisions

4503269

2 of 4  
**OP-2**

- Crack Fill and Slurry Seal
- Asphalt
- Sawcut and Remove
- Sidewalk
- Curb and Gutter

STREET & PUBLIC  
JTY EASEMENT  
- 4051, PAGE 51, MCR  
4136, PAGE 160, MCR

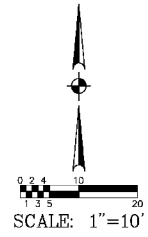
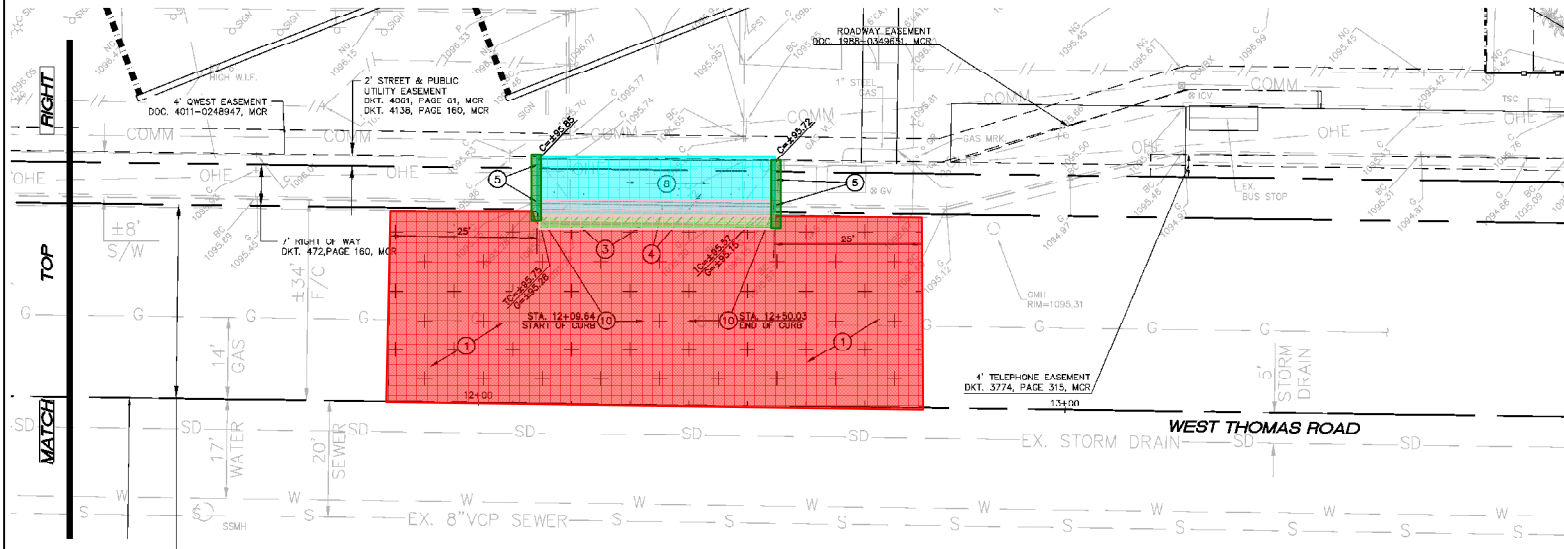


- OFF-SITE PAVING CONSTRUCTION NOTES:**
- ① CRACK FILL AND SLURRY SEAL ROADWAY PER THE CITY OF PHOENIX PAVEMENT CUT POLICY. APPLY TYPE IV SLURRY SEAL PER THE CITY OF PHOENIX REQUIREMENTS TO HALF WIDTH OF W. THOMAS ROAD OR N. 19TH AVENUE IMPACTED BY PAVEMENT REMOVAL OR REPLACEMENT. THE TREATMENT AREA SHALL EXTEND 25' IN BOTH DIRECTIONS FROM THE PAVEMENT CUTS. CRACK FILL AND SLURRY SEAL BETWEEN EXISTING AND NEW PAVEMENT AREAS PRIOR TO ANY PAVEMENT TREATMENT.
  - ② CONSTRUCT CONCRETE DRIVEWAY ENTRANCE (CITY OF PHOENIX STANDARD DETAIL NO. P1255-1).
  - ③ SAWCUT REMOVE AND REPLACE A MINIMUM 2 FEET (2') OR EXISTING A.C. PAVEMENT (MAG SECTION 336 AND CITY OF PHOENIX STANDARD DETAIL NO. P1200, TYPE B, OR MATCH EXISTING, WHICHEVER IS GREATER).
  - ④ SAWCUT AND REMOVE EXISTING CONCRETE VERTICAL CURB, GUTTER AND SIDEWALK.
  - ⑤ MATCH EXISTING ELEVATION AND LOCATION.
  - ⑥ INSTALL CURB TERMINATION (MAG STANDARD DETAIL NO. 222).
  - ⑦ EXISTING FIRE HYDRANT TO BE RELOCATED (SEE PUBLIC FIRE HYDRANT PLANS FOR DETAILS).
  - ⑧ INSTALL CONCRETE SIDEWALK (CITY OF PHOENIX STANDARD DETAIL NO. P1230).
  - ⑨ EXISTING LIGHT POLE TO REMAIN. PROTECT FROM DAMAGE.
  - ⑩ INSTALL CONCRETE VERTICAL CURB AND GUTTER (MAG STANDARD DETAIL NO. 220-1, TYPE A).
  - ⑪ CONTRACTOR SHALL COORDINATE WITH QWEST TO RELOCATE EXISTING COMMUNICATION BOX OUT OF NEW DRIVEWAY ENTRANCE LOCATION.
  - ⑫ CONSTRUCT DRIVEWAY ENTRANCE (CITY OF PHOENIX STANDARD DETAIL NO. P1250-2).
  - ⑬ INSTALL "RIGHT TURN ONLY" SIGN (M.U.T.C.D. R3-SR, WITH POST AND BASE PER MAG STANDARD DETAIL NO. 131, TYPE 'B' (TOP OF SIGN SHALL BE 6' ABOVE GRADE)).

**BDLRGROUP**

**Bowman**

Matthew J. Bowman  
Professional Engineer  
1000 N. Desert Drive, Suite 210  
Tempe, Arizona 85288  
Phone: (480) 224-0242  
www.bowman.com



OP-3

**METRO TECH - PH2**  
PHOENIX UNION HIGH SCHOOL DISTRICT

---

BIDDING SET

85-00-05  
Revisions

---

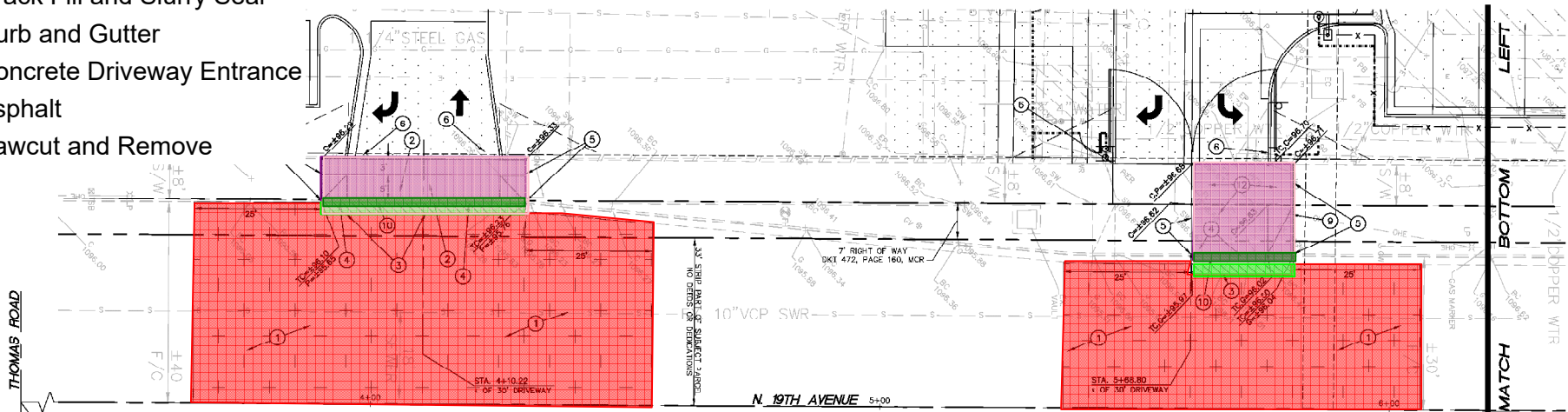
4503269

---

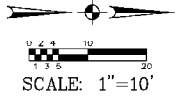
3 of 4

OP-3

- Crack Fill and Slurry Seal
- Curb and Gutter
- Concrete Driveway Entrance
- Asphalt
- Sawcut and Remove



STA. 0+00.00  
INTERSECTION OF THOMAS ROAD AND N. 19TH AVENUE

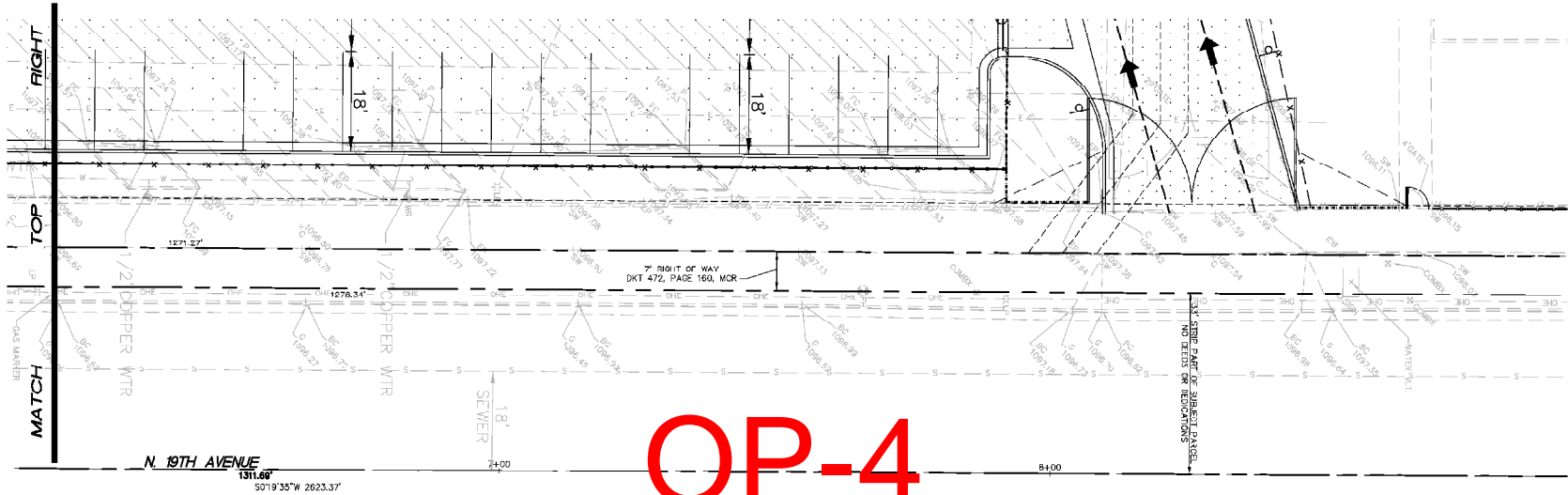


**OFFSITE PAVING CONSTRUCTION NOTES:**

- ① CRACK FILL AND SLURRY SEAL ROADWAY PER THE CITY OF PHOENIX PAVEMENT CUT POLICY. APPLY TYPE IV SLURRY SEAL PER THE CITY OF PHOENIX REQUIREMENTS TO HALF WIDTH OF W. THOMAS ROAD OR N. 19TH AVENUE IMPACTED BY PAVEMENT REMOVAL OR REPLACEMENT. THE TREATMENT AREA SHALL EXTEND 25' IN BOTH DIRECTIONS FROM THE PAVEMENT CUTS. CRACK FILL AND SLURRY SEAL BETWEEN EXISTING AND NEW PAVEMENT AREAS PRIOR TO ANY PAVEMENT TREATMENT.
- ② CONSTRUCT CONCRETE DRIVEWAY ENTRANCE (CITY OF PHOENIX STANDARD DETAIL NO. P1255-1).
- ③ SAWCUT REMOVE AND REPLACE A MINIMUM 2 FEET (2') OR EXISTING A.C. PAVEMENT (MAG SECTION 336 AND CITY OF PHOENIX STANDARD DETAIL NO. P1200, TYPE B, OR MATCH EXISTING, WHICHEVER IS GREATER).

- ④ SAWCUT AND REMOVE EXISTING CONCRETE VERTICAL CURB, GUTTER AND SIDEWALK.
- ⑤ MATCH EXISTING ELEVATION AND LOCATION.
- ⑥ INSTALL CURB TERMINATION (MAG STANDARD DETAIL NO. 222).
- ⑦ EXISTING FIRE HYDRANT TO BE RELOCATED (SEE PUBLIC FIRE HYDRANT PLANS FOR DETAILS).
- ⑧ INSTALL CONCRETE SIDEWALK (CITY OF PHOENIX STANDARD DETAIL NO. P1230).
- ⑨ EXISTING LIGHT POLE TO REMAIN. PROTECT FROM DAMAGE.
- ⑩ INSTALL CONCRETE VERTICAL CURB AND GUTTER (MAG STANDARD DETAIL NO. 220-1, TYPE A).

- ⑪ CONTRACTOR SHALL COORDINATE WITH QWEST TO RELOCATE EXISTING COMMUNICATION BOX OUT OF NEW DRIVEWAY ENTRANCE LOCATION.
- ⑫ CONSTRUCT DRIVEWAY ENTRANCE (CITY OF PHOENIX STANDARD DETAIL NO. P1255-2).
- ⑬ INSTALL "RIGHT TURN ONLY" SIGN (M.U.T.C.D. R3-5R, WITH POST AND RISE PER MAG STANDARD DETAIL NO. 131, TYPE 'B' (TOP OF SIGN SHALL BE 6' ABOVE GRADE)).



OP-4

**BIDLRGROUP**

**Bowman**  
Matthew J. Bowman  
Professional Engineer  
1800 N. Desert Drive, Suite 210  
Tempe, Arizona 85288  
Phone: (480) 224-0200  
www.bowman.com

**METRO TECH - PH2**  
PHOENIX UNION HIGH SCHOOL DISTRICT

BIDDING SET

65-0005  
Revisions

450386

4 of 4  
**OP-4**